



About Us



The Twinkle Preschool program is full-day preschool classroom for students with intense needs including communication, social, and behavioral needs. The Twinkle Classrooms are highly structured environments for learning. The principles, of ABA, TEACCH, and sensory integration are incorporated into the classroom daily.

The Twinkle Preschool program is only available for students on an Individual Education Program (IEP). The IEP team determines if the Twinkle Preschool Program is the least restrictive environment (LRE) for the preschool student.

Please contact us or your school district of residence for more information about the Twinkle Preschool Program.



ESC

of the WESTERN RESERVE
Inspiring Learning Through Innovation

Twinkle PRESCHOOL

For Additional Information

Beth Williams
Administrative Assistant, ESCWR
Call: 440-350-2563 ext. 1728
Email: bwilliams@escwr.org

[www.escwr.org/
PreschoolEarlyChildhood.aspx](http://www.escwr.org/PreschoolEarlyChildhood.aspx)

Child Find

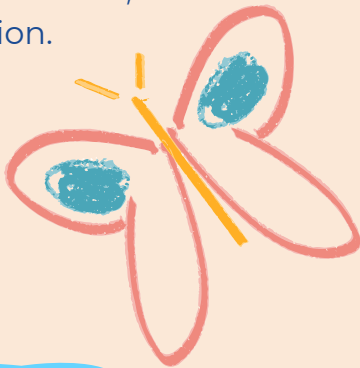
Preschool children ages 3-5 with disabilities may be unidentified because parents may not be aware that programs and services are available.

If you know of a child with a suspected disability not presently receiving assistance, please contact the child's district of residence.



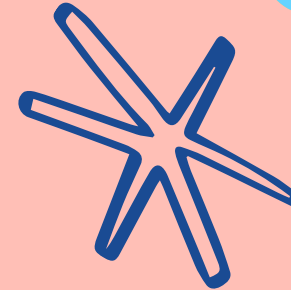
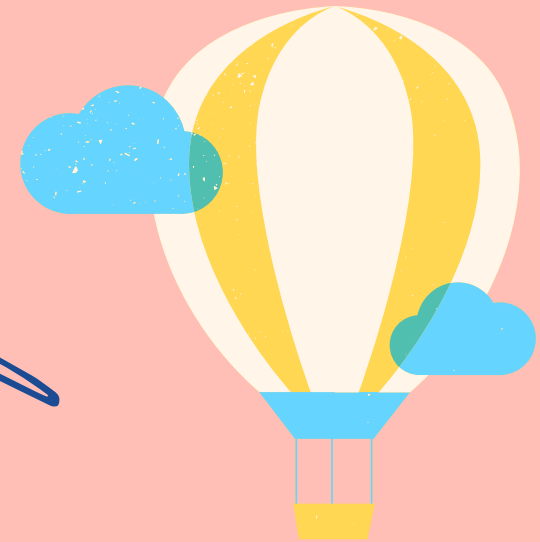
Our Program

- Grant-funded Arts education classes.
- Classroom collaboration with Behavior Specialists, Speech, Occupational, and Physical Therapists.
- Social skills playgroups are offered to any child enrolled in the program.
- Parent education series covering topics such as child behavior basics, personal skills, and communication.



- Classrooms meet 5 days a week
- Programming alignment to the Ohio Early Learning Standards.

All Twinkle Preschool teachers are licensed by the Ohio Department of Education and Workforce. All classrooms participate in Step Up to Quality.



Full Day Session

Monday - Friday
8:45 am - 2:45 pm

 Metzenbaum Center

ENROLL YOUR CHILD

A Great Place To Grow

